

BROOKLINE HIGH SCHOOL EXPANSION

BHS EXPANSION ADVISORY COMMITTEE MEETING
June 12, 2019



BHS ADVISORY COMMITTEE MEETING

AGENDA

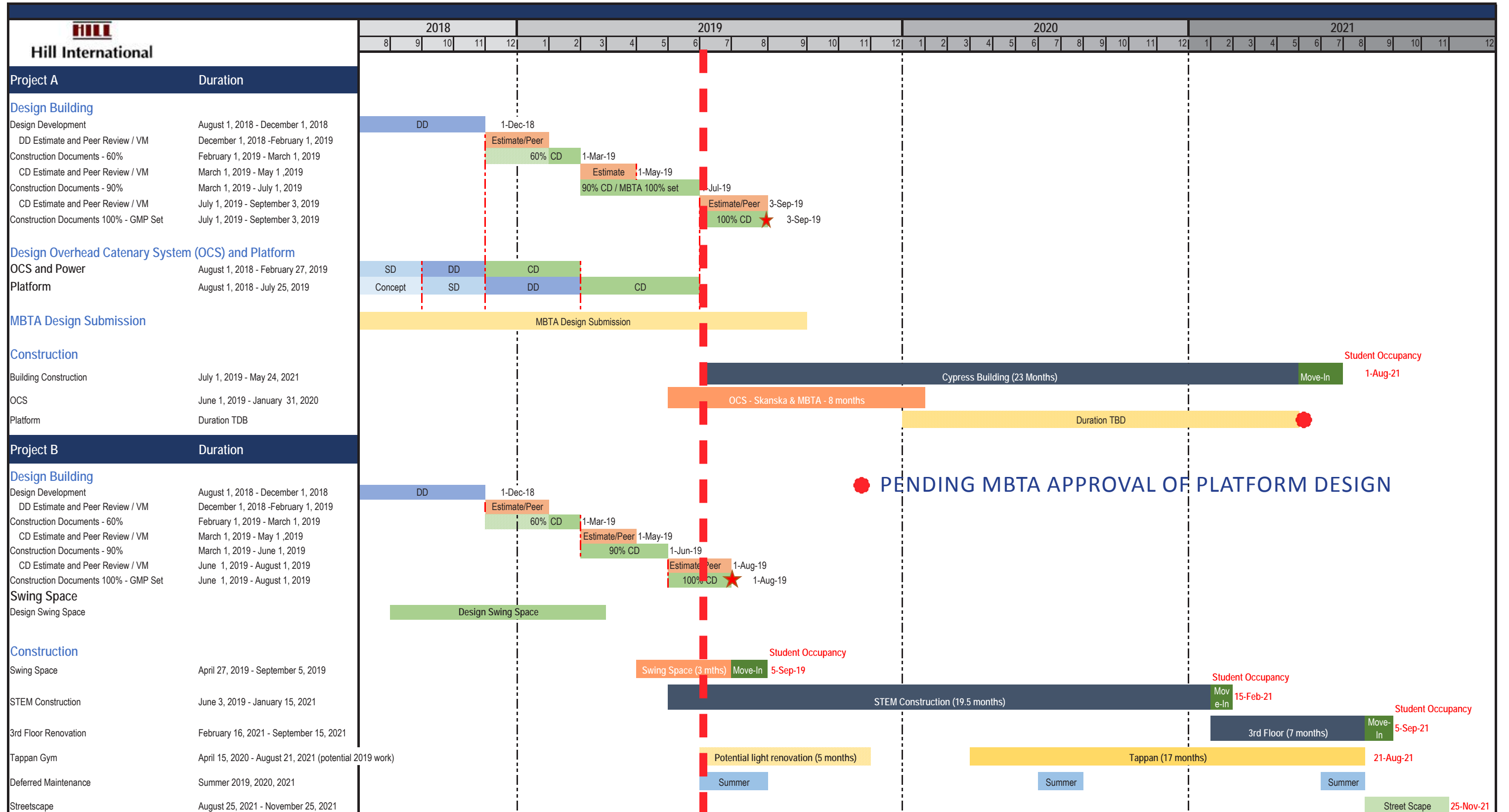
- Overall Schedule Update
- 3 Month Look Ahead
- MBTA Construction Update
- Design Update
 - MBTA / Cypress Building Plaza
 - Brington Path
 - Tappan Renovation / Addition



OVERALL SCHEDULE

June 11, 2019

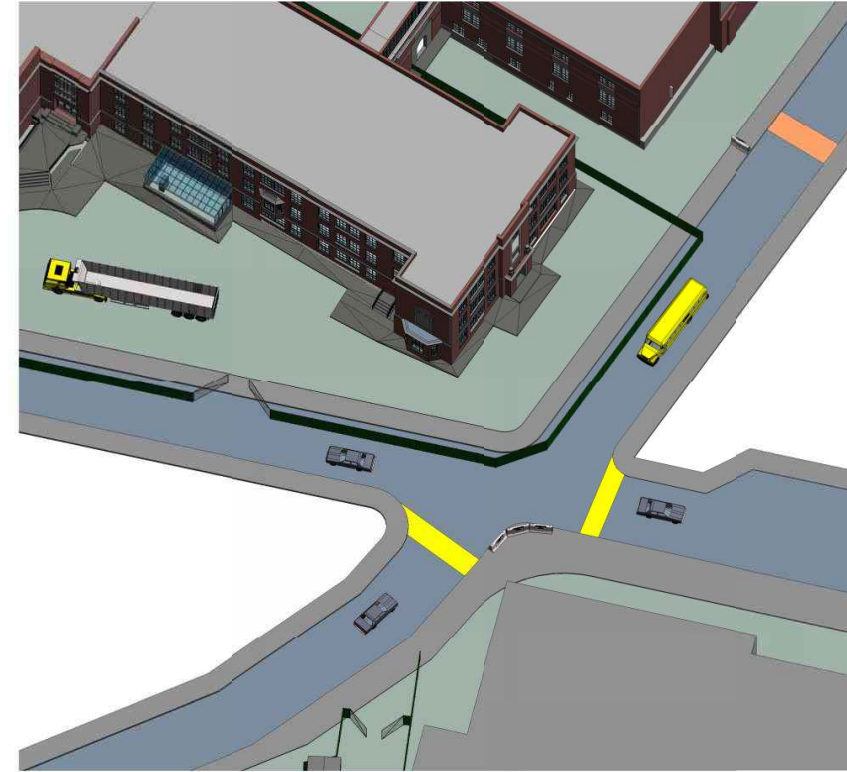
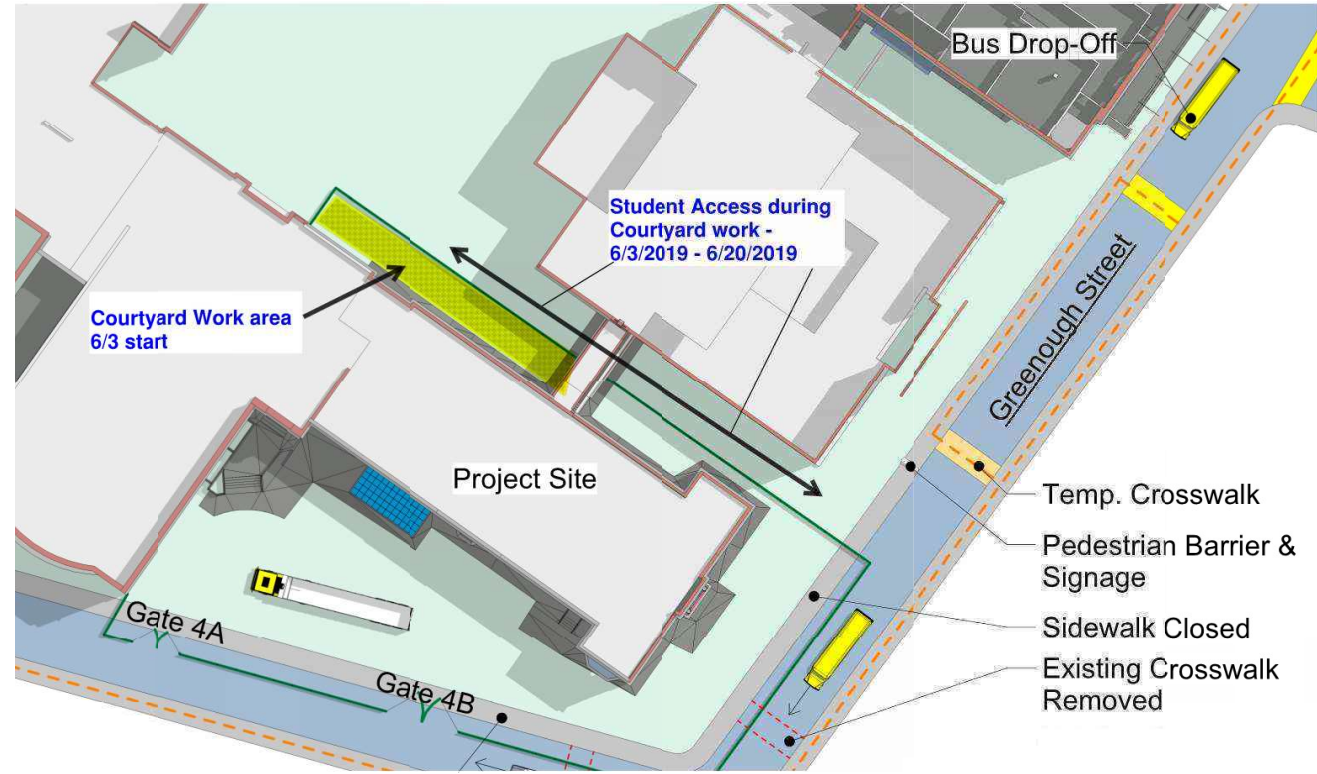
Brookline High School Expansion Project PRELIMINARY Summary Schedule



PENDING MBTA APPROVAL OF PLATFORM DESIGN

THREE MONTH LOOK AHEAD: STEM WING

SKANSKA



JUNE				JULY					AUGUST				SEPT	
WEEK 1	WEEK 2	WEEK 3	WEEK 4	WEEK 1	WEEK 2	WEEK 3	WEEK 4	WEEK 5	WEEK 1	WEEK 2	WEEK 3	WEEK 4	WEEK 1	WEEK 2
3-Jun	10-Jun	17-Jun	24-Jun	1-Jul	8-Jul	15-Jul	22-Jul	29-Jul	5-Aug	12-Aug	19-Aug	26-Aug	2-Sep	9-Sep

FENCE/EXC.

6/21 ▲ LAST DAY OF SCHOOL

EXCAVATION

MOVE RBT

EX. TUNNEL PIPING

FENCE @ ROBERTS

ABATEMENT

ELECTRICAL / PLUMBING / HVAC RELOCATIONS

PLACE FOUNDATION

HOT WATER BYPASS PIPING

REPLACE SIDEWALKS

NEW PUMP ROOM PIPING

TEMP. STAIRS

NEW RTU

INT. PARTITIONS

TEST & BAL.

FINAL INSP.

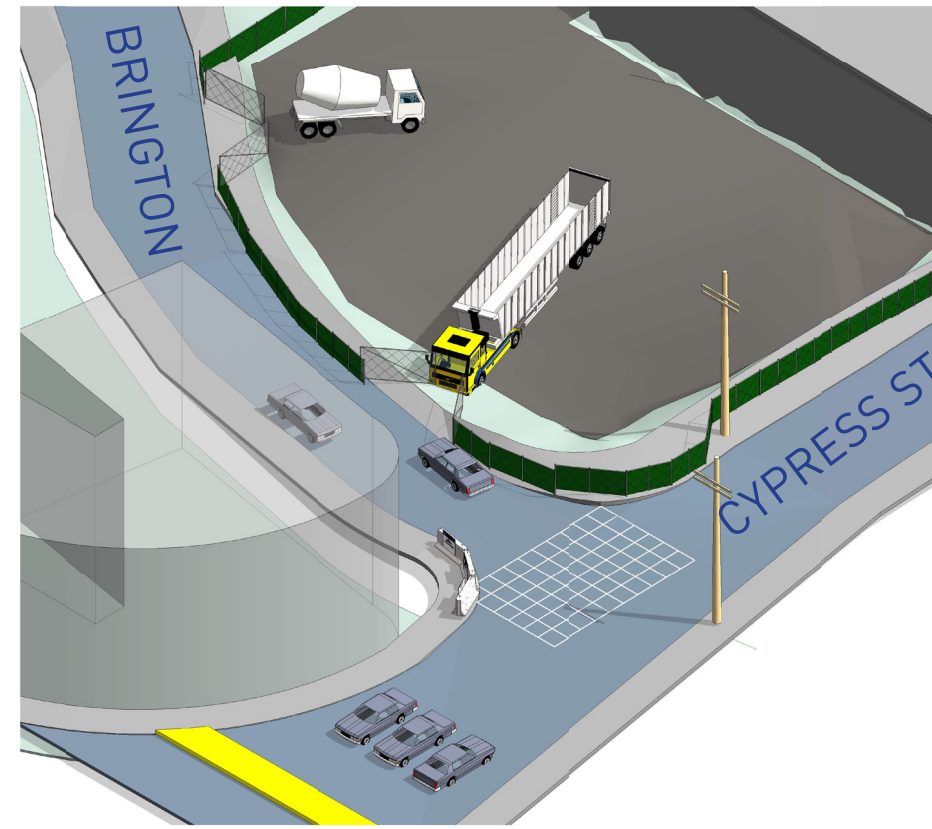
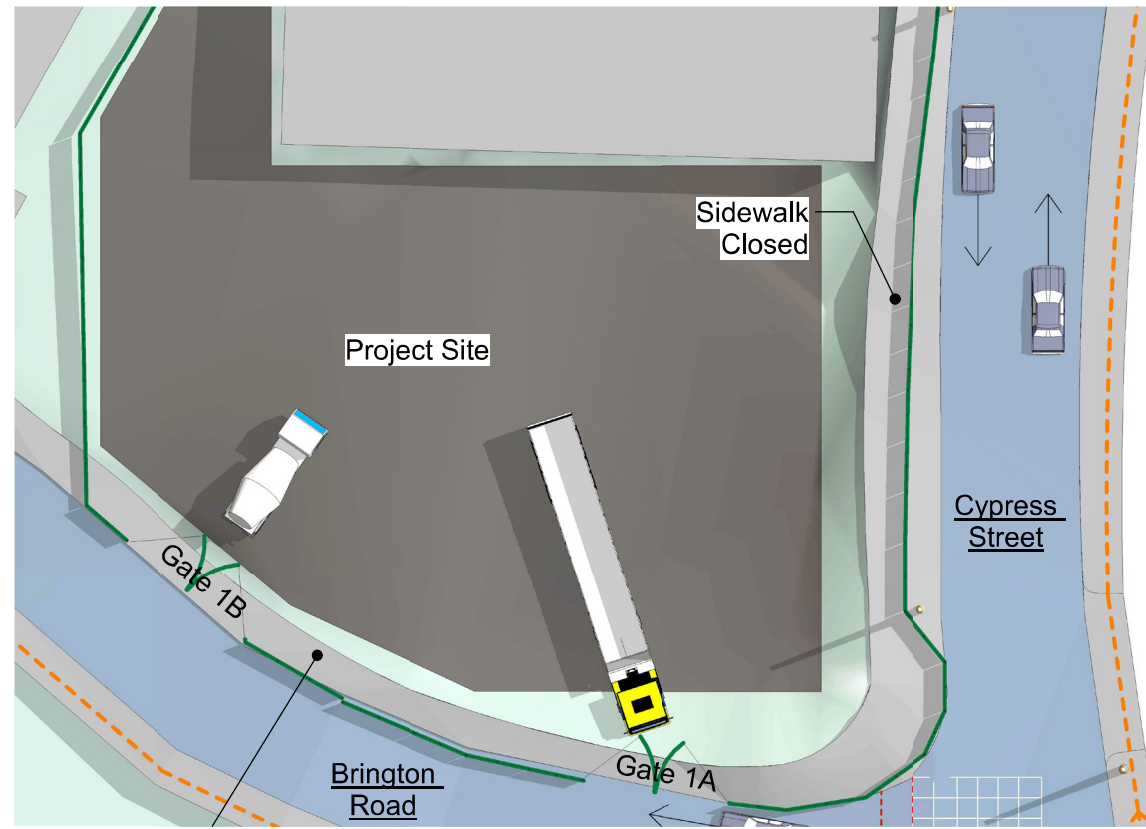
FIRST DAY OF SCHOOL ▲ 9/5

START ROBERTS DEMO



THREE MONTH LOOK AHEAD: CYPRESS BUILDING

SKANSKA



JUNE				JULY					AUGUST				SEPT	
WEEK 1	WEEK 2	WEEK 3	WEEK 4	WEEK 1	WEEK 2	WEEK 3	WEEK 4	WEEK 5	WEEK 1	WEEK 2	WEEK 3	WEEK 4	WEEK 1	WEEK 2
3-Jun	10-Jun	17-Jun	24-Jun	1-Jul	8-Jul	15-Jul	22-Jul	29-Jul	5-Aug	12-Aug	19-Aug	26-Aug	2-Sep	9-Sep

SURVEY & LAYOUT

MBTA SURVEY

6/21 ▲ LAST DAY OF SCHOOL

TEMP. FENCE

MONITORING

UTILITY DISCONNECTS

PARKING FARE DUCTBANKS

INSTALL S.O.E.

PILE LD. TEST

CULVERT PROTECTION

BUILDING DEMO

ELECTRICAL SURVEY - OVERHEAD WIRES

INSTALL D.M.P.

FOUNDATIONS

SOE @ MBTA

FIRST DAY OF SCHOOL ▲ 9/5

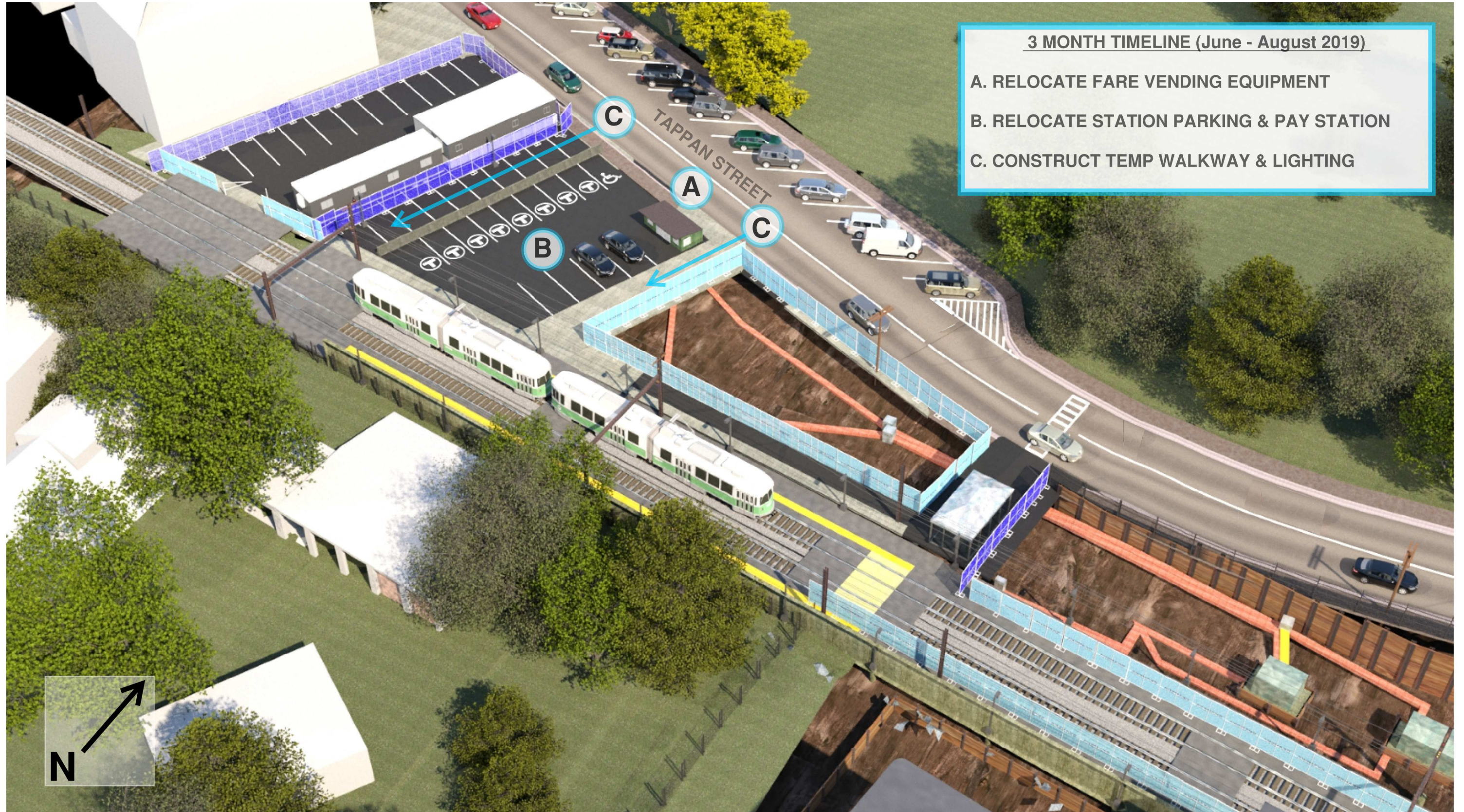


THREE MONTH LOOK AHEAD: MBTA CATENARY RELOCATION

SKANSKA



THREE MONTH LOOK AHEAD: MBTA CATENARY RELOCATION



THREE MONTH LOOK AHEAD: MBTA CATENARY RELOCATION



MBTA / CYPRESS BUILDING PLAZA DESIGN UPDATE

APRIL 22, 2019 DIAGRAMMATIC PLAN

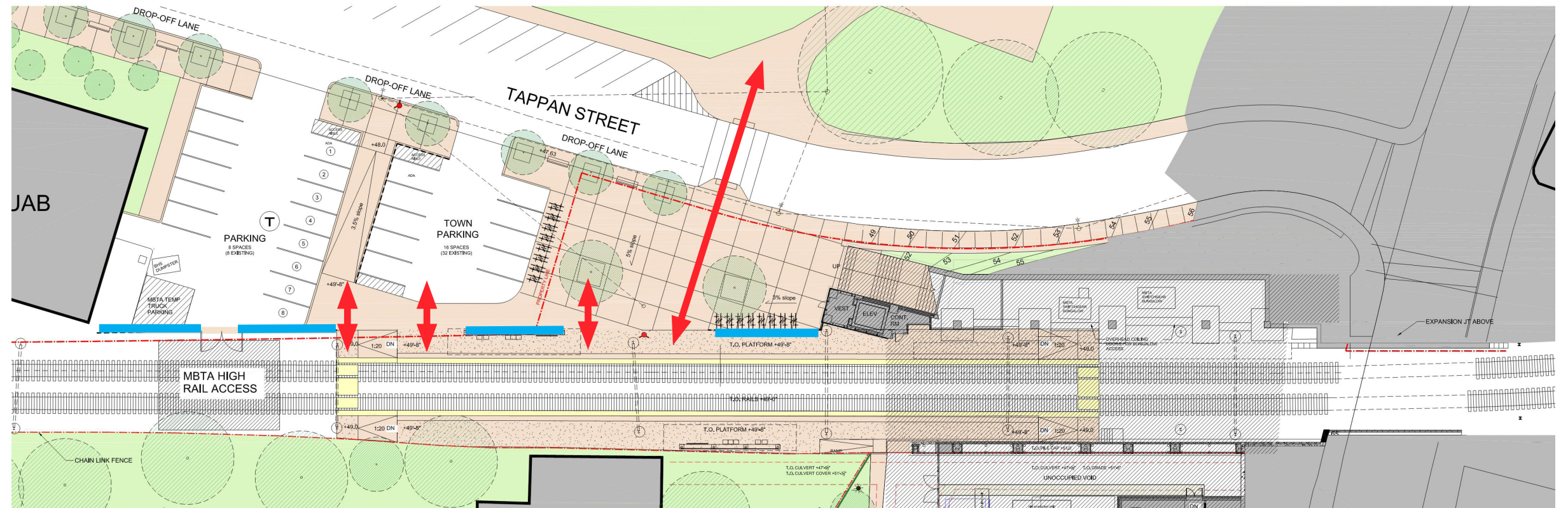
PRESENTED TO THE BHS ADVISORY COMMITTEE

PROPOSED DESIGN

Pending budget approval of plaza and Transportation Board approval of replacement neighborhood parking permits within 0.5 mile of High School.

- 16 Town parking spaces
- 8 MBTA parking spaces maintained by Town (revenue goes to Town)
- Crosswalk moved to align with Cypress Field Path (3 parking spaces removed at north side of Tappan St)
- New drop-off lane
- Enlarged Plaza
- Fence, bike racks at level change at Cypress Building elevator
- ~80 feet of access to MBTA platform

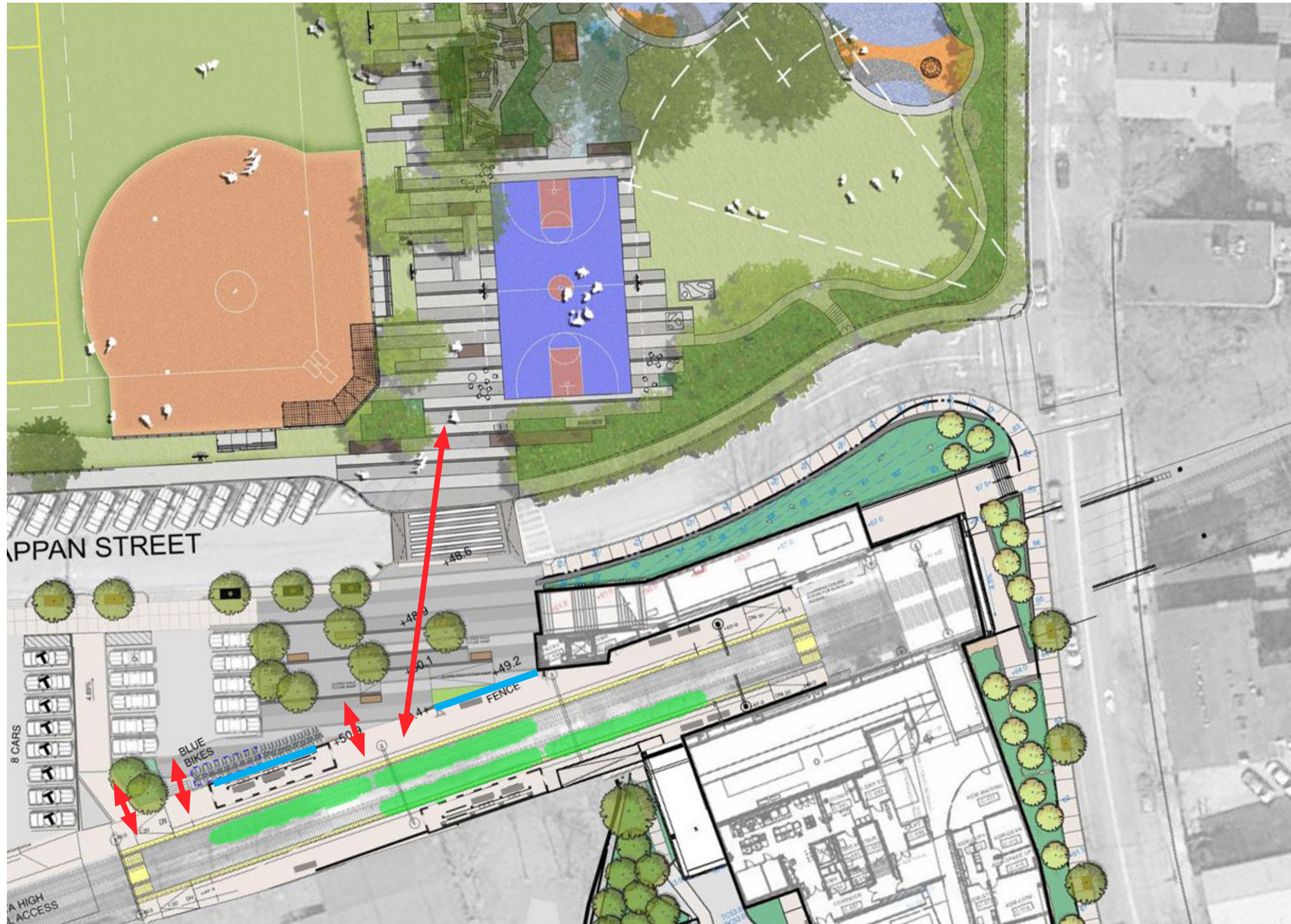
SOME FENCING TO ALLOW DIRECT ACCESS TO PLATFORM



MBTA / CYPRESS BUILDING PLAZA DESIGN UPDATE



MBTA / CYPRESS BUILDING PLAZA DESIGN UPDATE

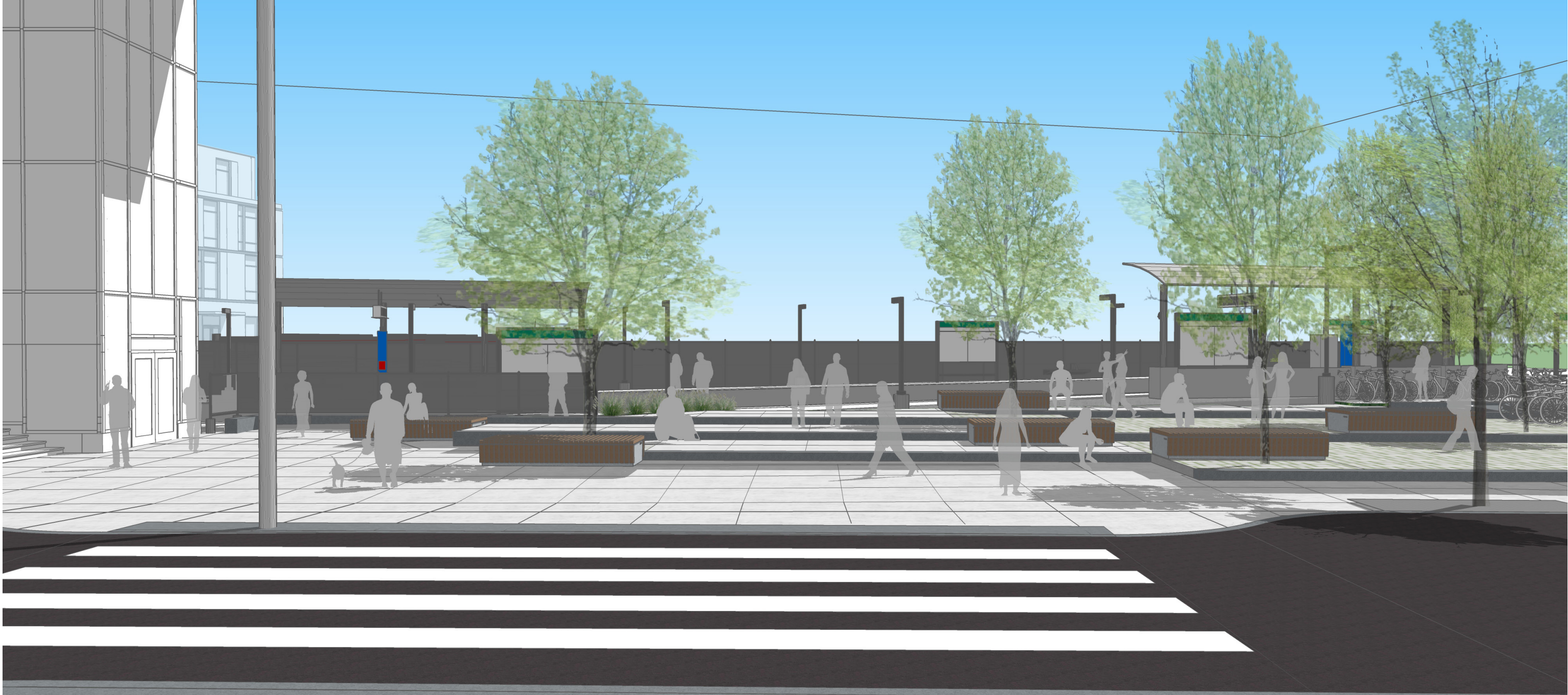


MBTA / CYPRESS BUILDING PLAZA EXISTING CONDITION



MBTA / CYPRESS BUILDING PLAZA DESIGN UPDATE

VIEW FROM TAPPAN ST CROSSWALK



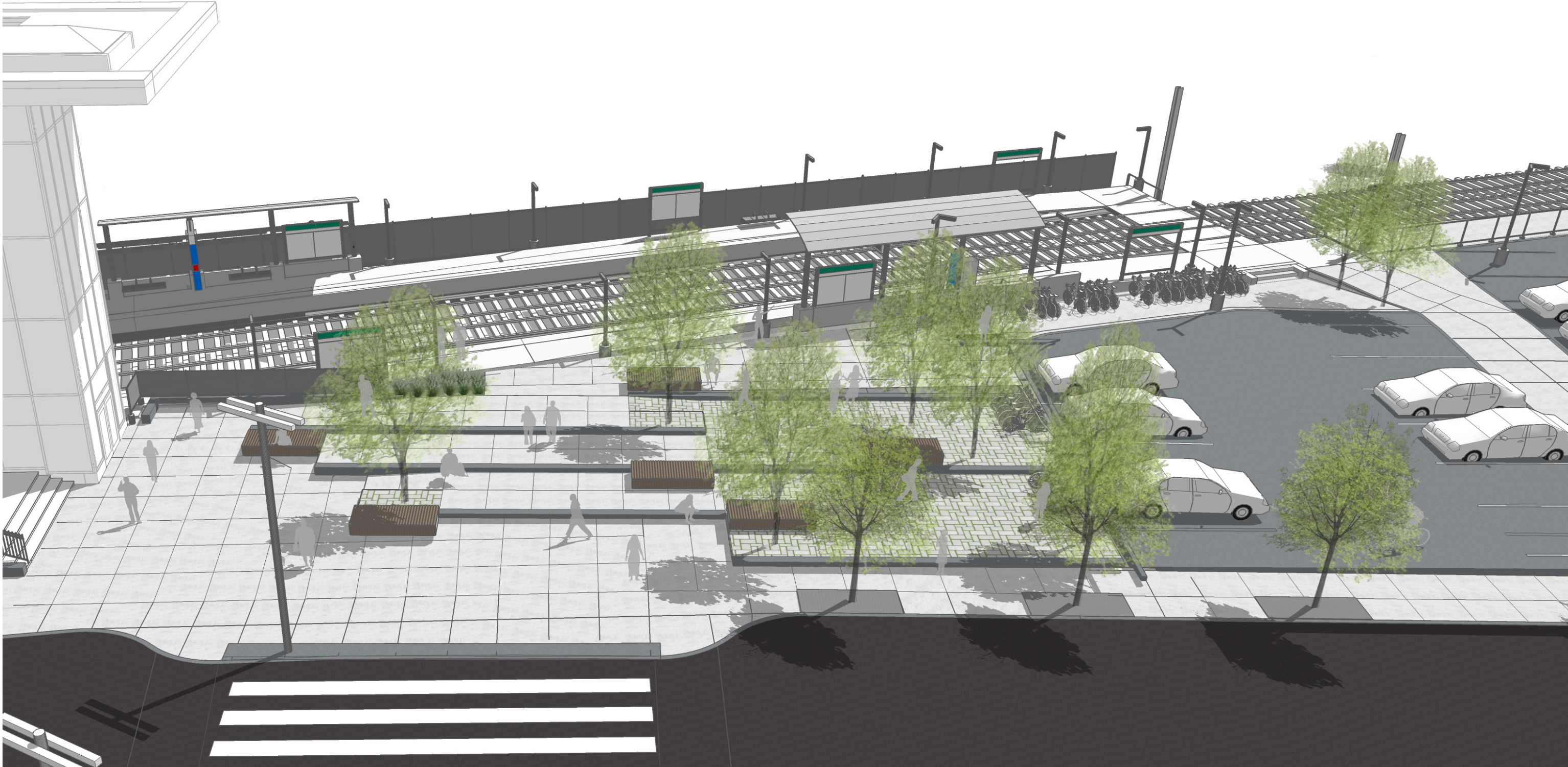
MBTA / CYPRESS BUILDING PLAZA DESIGN UPDATE

VIEW FROM BASE OF THE GRAND STAIRCASE

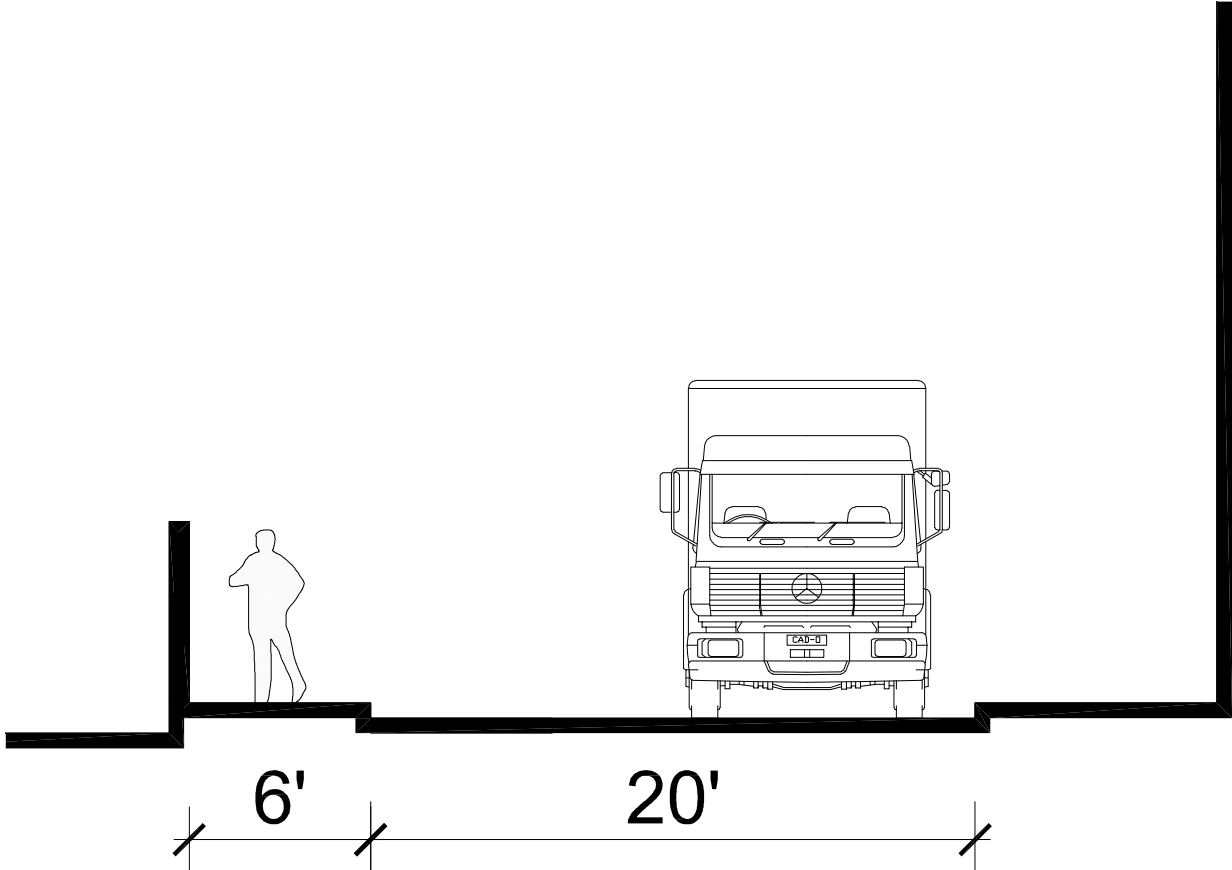
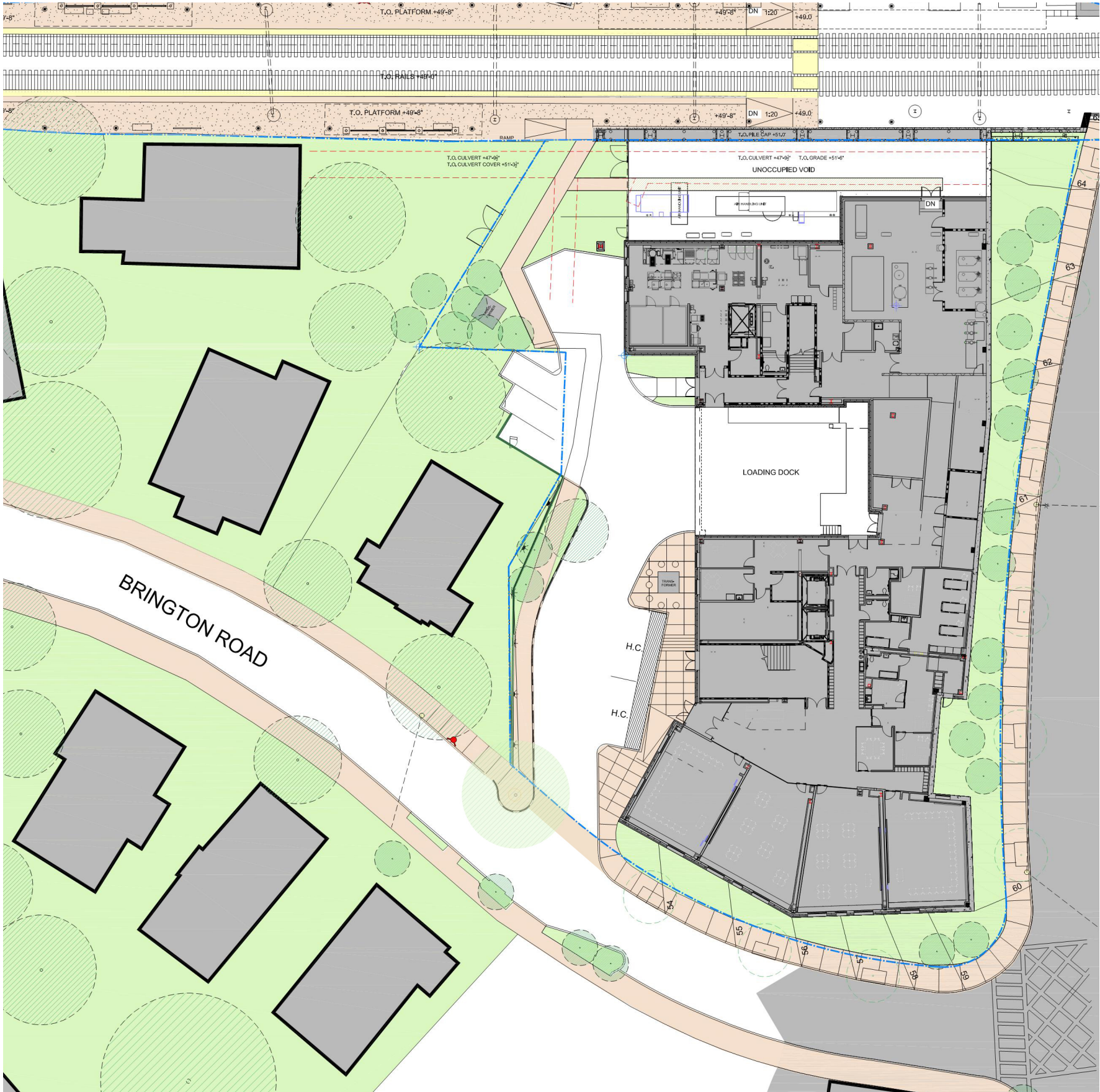


MBTA / CYPRESS BUILDING PLAZA DESIGN UPDATE

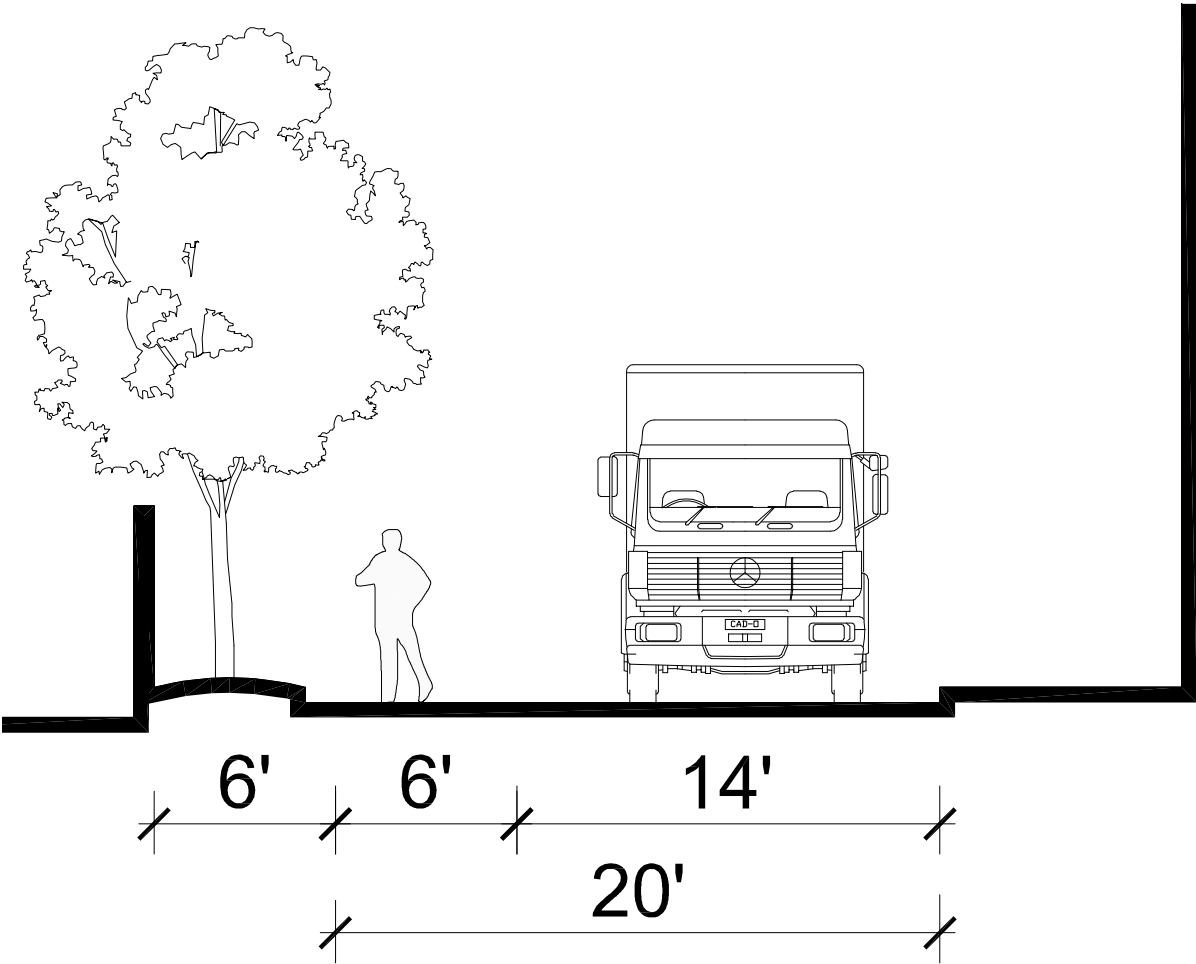
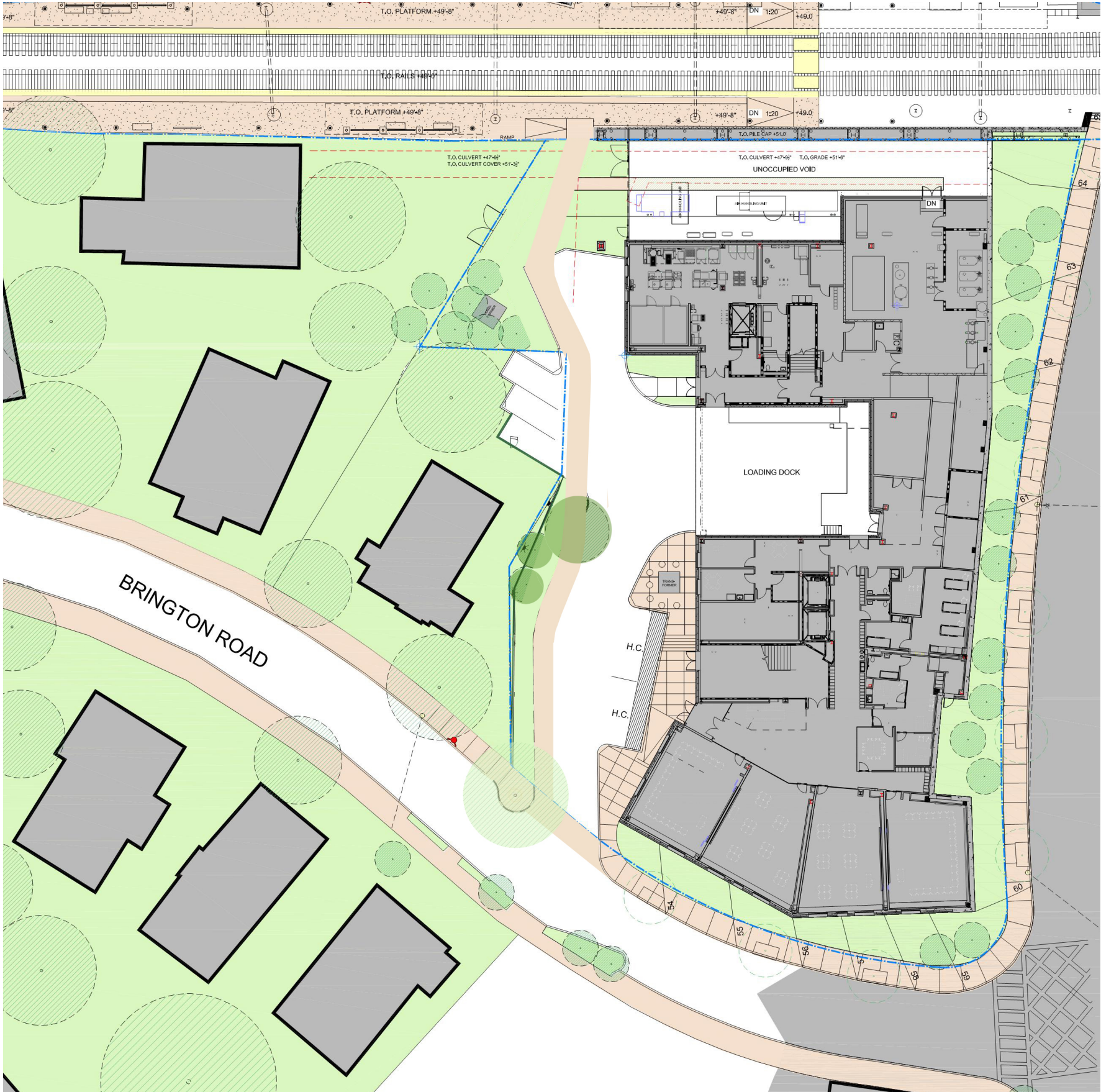
AERIAL VIEW



MBTA EGRESS PATHWAY: CURRENT DESIGN



MBTA EGRESS PATHWAY: POSSIBLE DESIGN



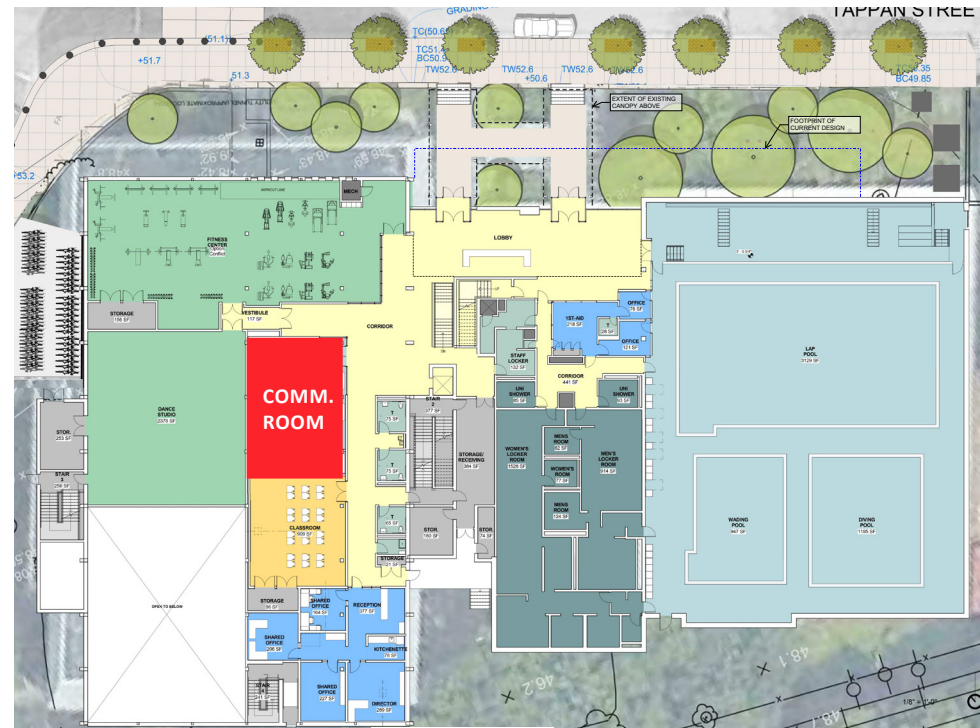
TAPPAN DESIGN UPDATE

CURRENT DESIGN



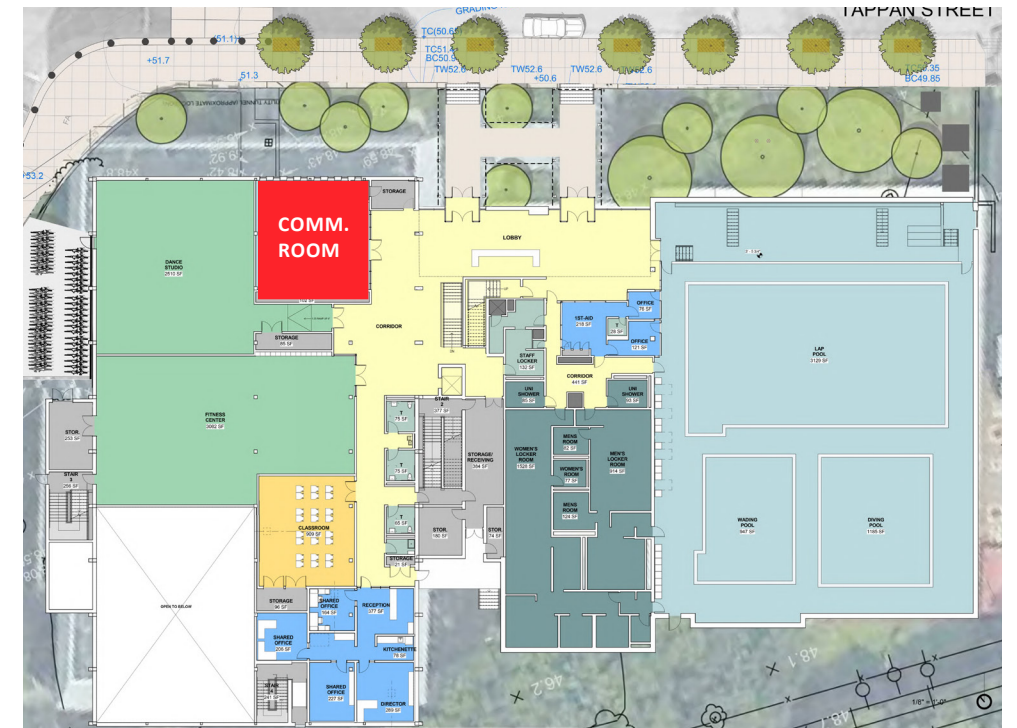
\$0 SAVINGS

POSSIBLE DESIGN 1



\$2.75M SAVINGS

POSSIBLE DESIGN 2



\$2M SAVINGS

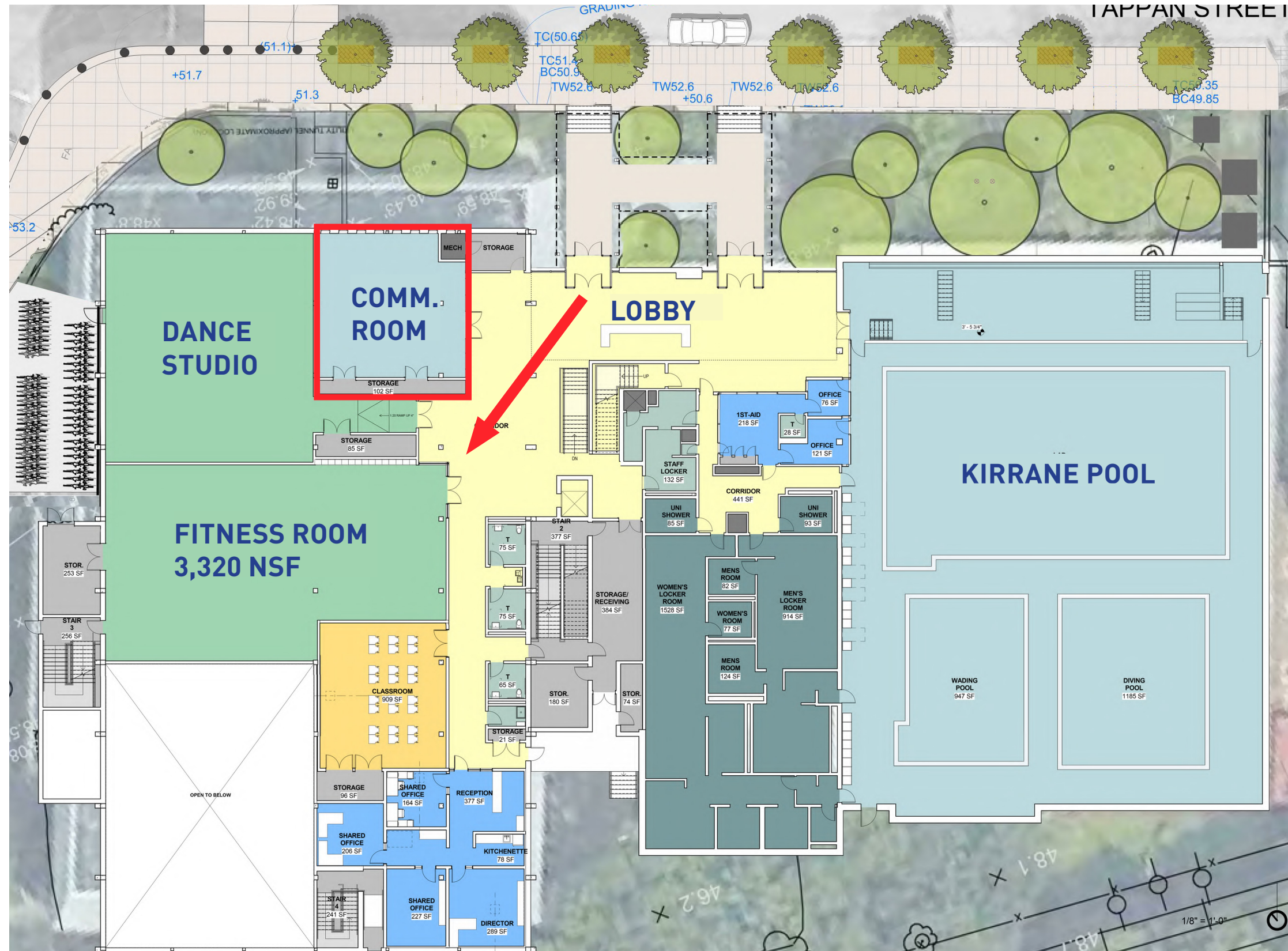
POSSIBLE DESIGN 1: VIEW TO ROOM UPON ENTRY



VIEW FROM ENTRANCE TOWARDS COMMUNITY ROOM



POSSIBLE DESIGN 1: VIEW TO ROOM UPON ENTRY



VIEW FROM ENTRANCE TOWARDS COMMUNITY ROOM



END

